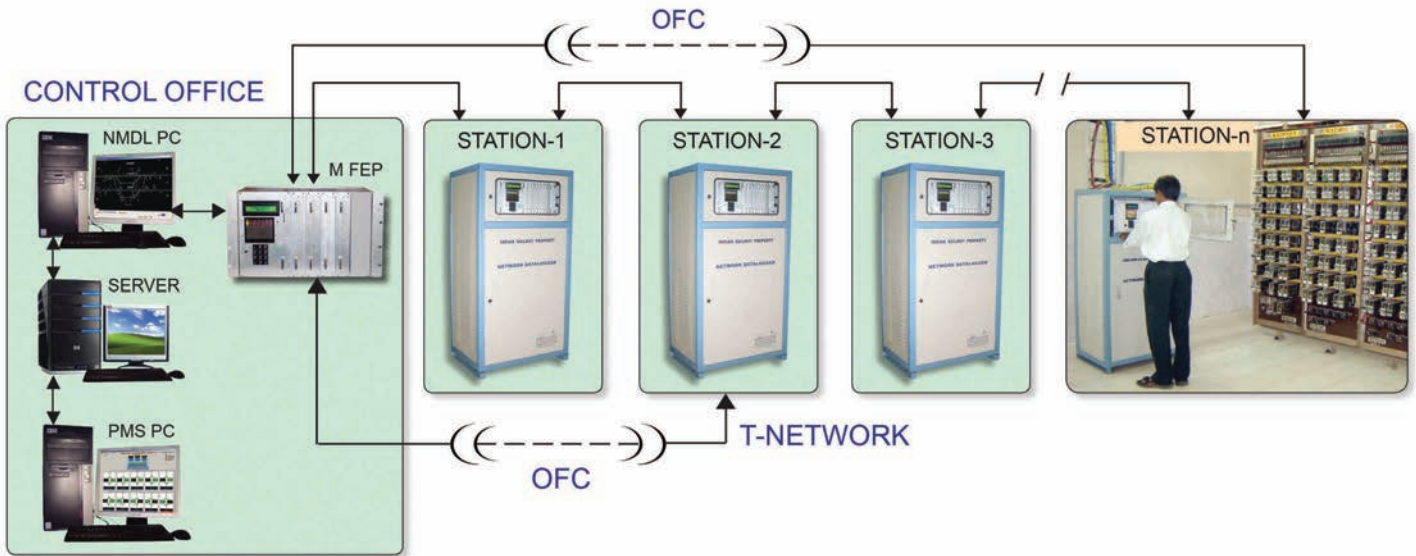


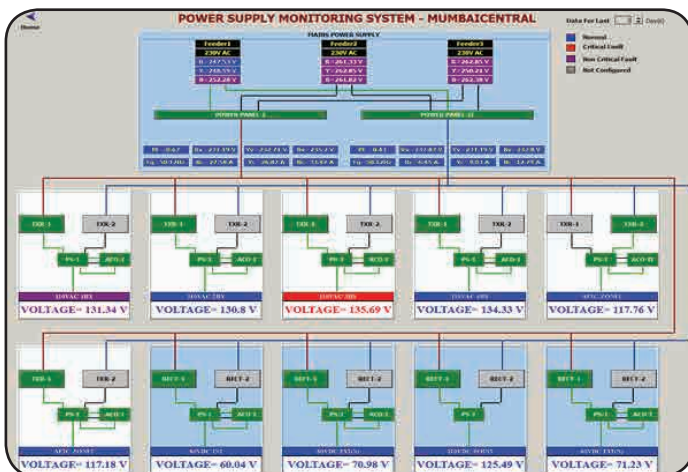
Power Monitoring System improves reliability of railway signaling system by identifying power supply system failures, before signaling system is affected. Status of all the stations in the section can be monitored on real time basis from central location.

SYSTEM DESCRIPTION

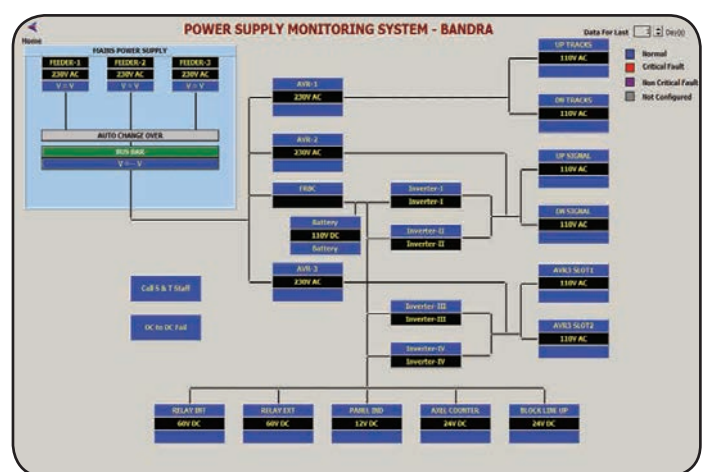


- ❖ Data logger in the station monitors the power supply system.
- ❖ Data recorded by data logger is sent to central place through data logger network.
- ❖ Software at central location receives the power supply data and generates useful online textual alarms for taking action by maintenance staff.
- ❖ The data is also shown online in GUI.
- ❖ Offline reports generated by the system helps maintenance engineer to identify the required inputs to improve MTBF of the power supply system.

Conventional PMS



IPS







POWER MONITORING SYSTEM

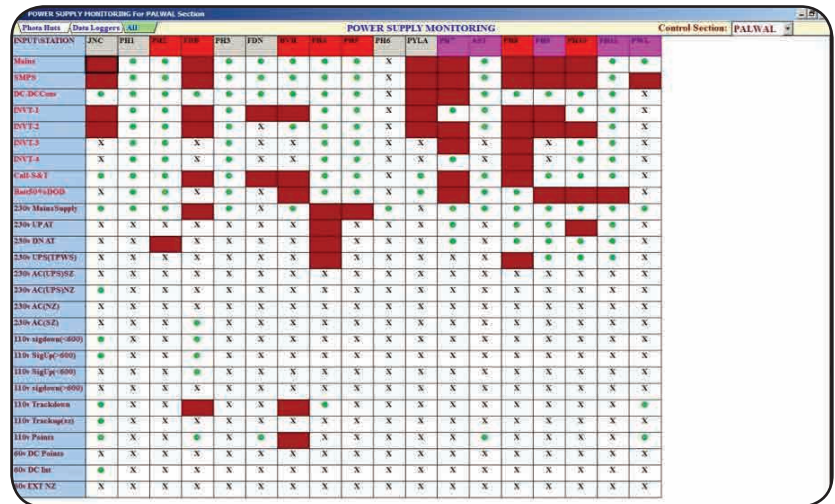
FEATURES

- ❖ Health of all power supply systems in multiple stations is displayed in single screen.
- ❖ Identification of faulty module in power distribution in a station is made easy.
- ❖ Mimic display of detailed power supply scheme of selected station, consisting of all power supply equipment like transformer, rectifiers, program switch etc.
- ❖ Online voltage & current values being monitored are shown in mimic display.
- ❖ Generation of visual alarms when fault is triggered.
- ❖ Alarms history for analyzing the variations in power supply.
- ❖ Stations with more power supply failures in a network, and also abnormal power supply channels in that station are shown in the reports.
- ❖ For 3-phase power distribution, to ensure uniform load distribution, current Consumption details in each phase are shown
- ❖ Details regarding DG Set run hours, main supply failure, IPS availability is provided to analyze usefulness of IPS.
- ❖ Data of any analog/digital channel shown in graphical and textual form.
- ❖ Energy logger data shown in graphical and textual form for easy analysis.
- ❖ Auto mail generation to configured users at configured time.
- ❖ SMS on occurrence of any fault to configured users.

INDICATION IN ONLINE PMS

-  Healthy Status
-  High / Low Voltage
-  Input not Available
-  Data not available from 5 minutes

Online PMS



INPUT STATION	JNC	PH1	PH2	PH3	FDN	RTA	DEL	PHS	PYLA	PH	LET	PH2	PH3	PH4	PH5	PH6
Main																
SMPS																
DC-DC Conv																
BVFE.1																
BVFE.2																
BVFE.3																
BVFE.4																
CHG BATT																
BattG1+(DGB)																
230v Mains Supply																
230v LPAI																
230v DN AT																
230v CPIC(PWS)																
230v ACUPSIN2																
230v ACUPSIN2																
230v ACIN2																
230v ACIN2																
110v siglmac-009																
110v siglpc-009																
110v siglpc-009																
110v siglmac-009																
110v TrackingIn2																
110v Points																
40v DC Points																
40v DC Bat																
40v EXT NZ																

- ❖ Online PMS helps to monitor the health of various power supply equipment's to ensure timely preventive action.
- ❖ Monitors the Power Supply Channel status of all stations at a single glance from remote places.
- ❖ Generation of visual alarms when fault is occurred.