

Since
1985

electronics[®]
To provide insight for enhancing wealth

SMART WATER



To ensure *right quality* of water to be distributed daily



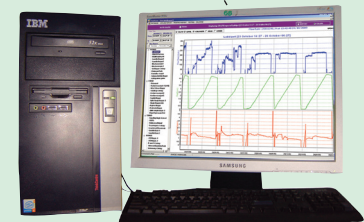
To ensure *right quantity* of water daily to the public at the *right time*



To reduce *cost of per unit water* by reducing *water losses* due to overflows, leakages

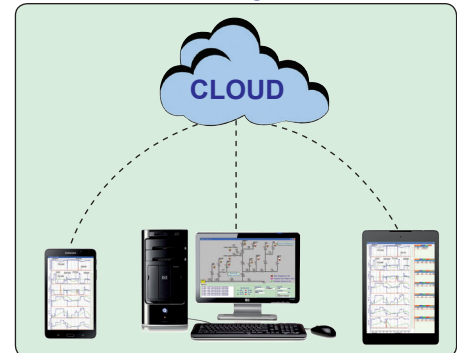


Central Monitoring Unit



Smart Water Software

Remote Access through Mobile / Tablet



BENEFITS

- ❖ Total accountability in water production and water distribution system.
- ❖ Continuous monitoring and display of network flow status and supervisory controls.
- ❖ Reports overflows, leakages, Unaccounted For Water (UFW) at various stages of distribution.
- ❖ Uniform distribution of water can be achieved throughout the supply area eliminating imbalances.
- ❖ Online information and historical data helps in managing demand variations.
- ❖ Automated reports helps in taking timely decisions.
- ❖ Continuous assessment can ensure water quality & quantity.
- ❖ Improves quality of service and overall plant efficiency.

"A PRODUCT DEVELOPMENT COMPANY"

electronics®
To provide insight for enhancing wealth

Schedule Deviation Report



Sl. No.	Subsidy ID	Reservoir Name	Normal Lit. Count(Rt)	Over-flow Quantity(Rt)	Leakage Quantity(Rt)	Escalated Filling Count	Escalated Distribution Count	Surplus Supply %	Leaser Supply %	Late Distribution	Late Distribution
1	1	Malikarjun Pet	11		2,323.00		12	16			
2	1	Lorry Stand	12		7,715.00		2	63			8
3	1	Frizerpet				2				28	
4	1	Gandghi High School	12		11,856.00	3	4			61	37
5	1	Priyadarshini Colony	10		18,072.00	1	1	1			5
6	1	Orrs	14		7,510.00		17	30			4
7	1	Four Pillar Colony	32		20,098.00		5	49			21
8	1	H B Colony - 1								25	
9	1	H B Colony-2	26	98.00	374.00	1				22	21
10	1	Tannerpet						31			
11	1	Brahmangari Mattam-1								11	
12	1	Srinivasa Mahal									
13	1	Gollapalem Gattu	21		4,506.00			50			20
14	1	Ambedkar Colony						21			
15	1	Rama Rayya Nagar	18		18,567.00	4	13	20			9
16	1	Gandhi Bavi-1	3		2,346.00		2	64			
17	1	Gandhi Bavi-2			3,710.00			26			

Online Exceptions		
Exceptions	Equipments Health	Faults
RESERVOIR NAME	FAULT MESSAGE	OCCURRED TIME
Gollapalem gattu	Less Chlorine	01/19/2010 00:06:18:844
Fish Market	Less Chlorine	01/19/2010 00:13:26:484
H B Colony-2	Less Chlorine	01/19/2010 00:07:30:422
H B Colony- 1	Filling Started Late	01/19/2010 00:02:45:688
H B Colony- 1	Less Chlorine	01/19/2010 00:04:04:891
Kedareswarpet2	Filling Started Late	01/19/2010 00:01:00:609
Kedareswarpet2	Less Chlorine	01/19/2010 00:06:54:219
Machavaram 2	Filling Started Late	01/19/2010 23:59:53:234
P and T Colony	Filling Started Late	01/19/2010 00:03:16:78
OREG	Filling Started Late	01/19/2010 00:03:03:812
Bank Colony	Filling Started Late	01/19/2010 00:12:06:859
Priyadarshini Colony	Filling Started Late	01/19/2010 00:03:30:141
Nelson Mandela Park	Filling Started Late	01/19/2010 00:06:17:516
Vambay colony	Filling Started Late	01/19/2010 00:03:00:859

[illegible]

T (Days)		FILLINGS (H+MM)										INFLOW VOLUME (H+MM)										LEVEL										DISTRIBUTION										UPFLOW (G/L)										AVERAGE (G/L)	
S.No	Reservoir Name	Capacity (G/L)	Height(m)	From(m)	ToTime (H+MM)	Actual Duration (H+MM)	InFlow(m3)	OnFlow (G/L)	Storage (G/L)	Outr (m3)	Total Inflow (G/L)	FillStart Level	FillStart Storage	FillEndLevel	FillEndStorage	NetPumped (G/L)	%Reservoir Filled	Fill Status	From(m)	ToTime (H+MM)	Duration (H+MM)	Start Level	Start Volume	End Level	End Volume	Net QTY Distributed	Fill	Overflow	Storage	Dist	Total	Filling	Distribution																				
1	Labbeji	1,477.00	5.00 18.10	01:27	07:13	1,495.26	0.00	1,000.63	116.75	2,692.64	0.10	25.10	4.90	1,583.91	1,558.01	98%	FULL	05:01	03:34	01:21	4.08	1,539.97	0.20	50.65	1,499.32	43.55	0.00	1,124.57	86.08	1,177.77	1.27	1.80																					
2	Match Factory	1,477.00	5.00 20.25	05:28	18:09	1,495.02	0.00	27.20	440.26	4,732.22	0.02	60.65	4.91	1,645.91	1,558.01	98%	FULL	06:10	05:01	02:39	4.97	1,423.02	0.29	67.65	1,395.36	3,050.66	0.00	266.20	24.00	3,357.65	1.42	0.86																					
3	Madhavpet	1,477.00	4.56 20.03	05:28	18:09	1,495.02	0.00	80.67	1,593.36	3,679.33	0.01	34.31	3.96	1,581.36	1,558.01	91%	FULL	06:02	09:05	03:03	3.89	1,213.18	0.25	77.87	1,195.21	3,412.42	0.00	29.04	38.00	430.46	1.57	0.70																					
4	Lorry Stand	1,477.00	3.86 20.29	02:24	05:56	1,498.80	0.00	1.52	1.18	1,409.50	0.11	36.62	3.56	1,376.92	1,341.30	97%	FULL	04:59	09:05	04:06	3.50	1,362.39	0.20	65.17	1,297.22	65.50	0.00	26.05	1.18	92.73	2.44	1.88																					
5	Gandhi Nagar1	1,477.00	4.56 18.15	03:28	08:20	1,553.32	0.00	17.10	300.66	1,881.08	0.74	24.93	4.29	1,437.35	1,189.42	95%	NOT FULL	06:00	07:46	01:45	4.02	1,362.89	1.08	36.11	1,297.22	373.40	0.00	107.56	300.66	762.12	1.53	1.69																					
6	Gandhi Nagar2	1,477.00	4.16 18.10	02:11	05:51	1,481.04	0.00	4.56	2.01	1,487.69	0.06	26.79	3.89	1,337.61	1,118.65	94%	NOT FULL	06:57	07:31	01:34	3.68	1,161.66	0.86	29.44	1,057.12	332.45	0.00	36.36	2.01	418.49	1.70	0.76																					
7	Madhavpet	1,477.00	3.86 17.10	02:59	07:51	1,495.02	0.00	138.67	1,593.36	3,679.33	0.01	34.31	3.96	1,581.36	1,558.01	91%	FULL	06:02	09:05	03:03	3.89	1,213.18	0.25	77.87	1,195.21	3,412.42	0.00	29.04	38.00	430.46	1.57	0.70																					
8	Madhavpet	1,477.00	3.86 18.39	05:00	10:21	547.91	0.00	3.08	5.09	658.08	0.41	70.73	4.29	429.59	368.93	93%	NOT FULL	06:02	05:42	00:42	4.29	429.59	0.42	79.44	357.12	189.06	0.00	13.33	3.86	628.06	0.00	0.00																					
9	Gandhi High School	1,023.00	3.30 19.63	02:28	06:36	1,049.91	0.00	2.50	7.55	1,066.96	0.00	34.47	3.12	916.48	807.11	98%	FULL	05:58	07:49	02:14	2.94	860.55	0.25	49.03	802.03	169.90	0.00	68.43	7.55	245.48	1.99	1.11																					
10	Madhavpet-1 (old)	1,023.00																																																			

Approved by
RDSO
Govt. of INDIA
Ministry of Railways

EFFTRONICS SYSTEMS PVT. LTD.
Brundavan Colony, Vijayawada-520 010, AP., INDIA
+91 866 2466684, 2466675. www.efftronics.com