

Since  
1985

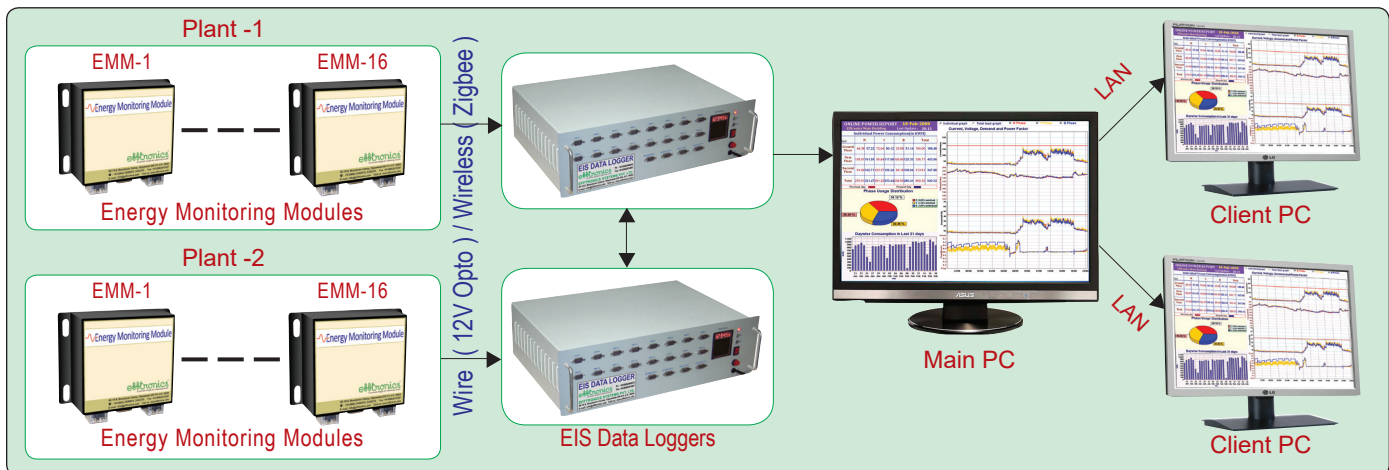
**e#tronicx**<sup>®</sup>  
To provide insight for enhancing wealth

# ENERGY INFORMATION SYSTEM

- ❖ Logging the energy consumption information from various energy accountable areas.
- ❖ Measures and records various energy parameters.
- ❖ Identifies Energy Conserving Opportunities (ECOs)



## BLOCK DIAGRAM



## PARAMETERS

- ❖ Real time monitoring and data storing of the power consumption is done in a scanning interval of 5secs.
- ❖ The data can be analysed by using the Reports Software which helps in identifying the abnormalities (or) wastage in Energy Consumed.
- ❖ Cumulative Energy & Average Power, RMS Voltage, RMS Current are obtained for every 5secs.

## BENEFITS

- ❖ Identify Energy conserving opportunities by real time monitoring of energy consumption.
- ❖ Overcome penalties due to Maximum Demand Crossings and for poor PF.
- ❖ Facilitates in improving load efficiency by identification of areas of wastage.
- ❖ Helps in Phase balancing.

## FEATURES

- ❖ On-line power consumption information of the plant.
- ❖ Information on different energy parameters graphically and textually.
- ❖ Alerts on Maximum Demand Cross Over and for the Poor PF.
- ❖ Alerts if a load is in ON beyond the user specified time.
- ❖ SMS and Email alerts in case of faults.
- ❖ Reports:
  - Shift wise and Phase wise Energy consumption for user specified duration.
  - Energy consumption at different areas of a plant in hierarchical order.
  - History of power consumption information of a load according to On / Off times.

*"A PRODUCT DEVELOPMENT COMPANY"*

# ENERGY INFORMATION SYSTEM

**efftronics®**  
To provide insight for enhancing wealth

## SPECIFICATIONS

### Energy Monitoring Module

Type	Energy Monitoring Module
Module Application	LT / HT
Voltage Input	AC VRMS (Line to Neutral)
Current Input	Current is sensed through the CT's
Frequency	45 – 55 Hz
Accuracy Class	1
Working Load Range	10% to 120%
Measuring Method	3Phase 4 Wire / 3 Wire , 1Phase 2Wire
Communication	Current Loop & Wireless (Zigbee)
Auxiliary Power Supply	24V DC
Operating Temperature	10°C to 65°C

### EIS Data Logger

Type	Data Logger
Power Supply	24V DC
Processor Details	Motorola 68k Micro processor.
Communication	RS 232 / current loop comm. for Upload data.
Ports details	16 ports for EMMs 4 Ports for Networking / Debugging.
General operating conditions	Operating Temperature : -10°C to 70°C Operating Humidity : 90% Rh at 40°C

Preadjustments and calibration depends on following Parameters:

- Voltage Input
- Current Input
- HT / LT Application
- PT Primary
- CT Primary

## APPLICATION AREAS

❖ Industries

❖ Commercial buildings

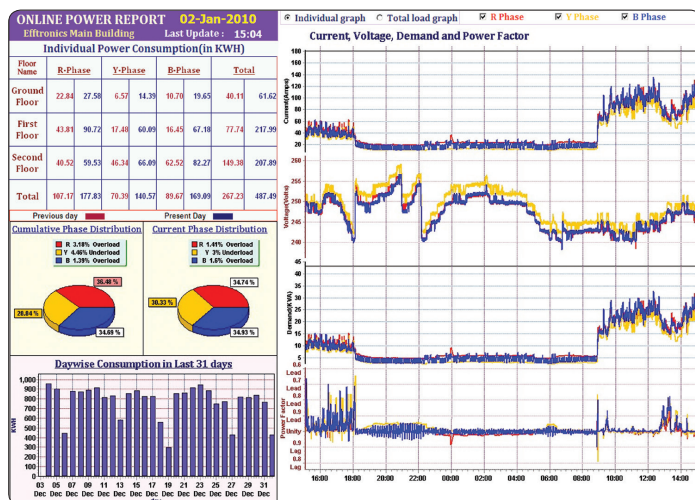
❖ Airports

❖ Shopping Malls

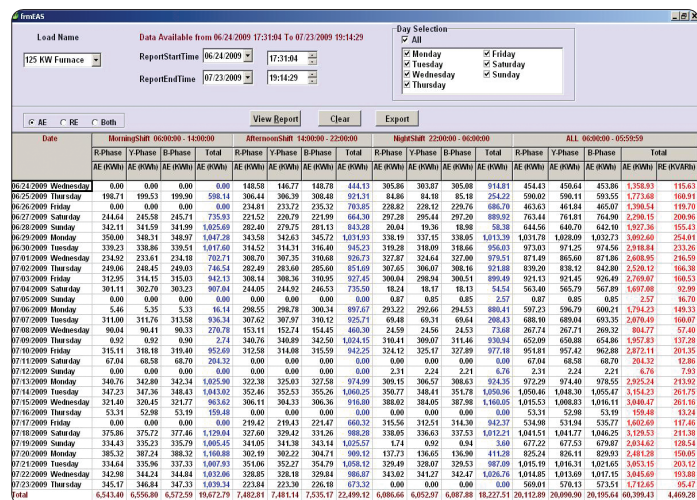
❖ Hospitals

## REPORTS

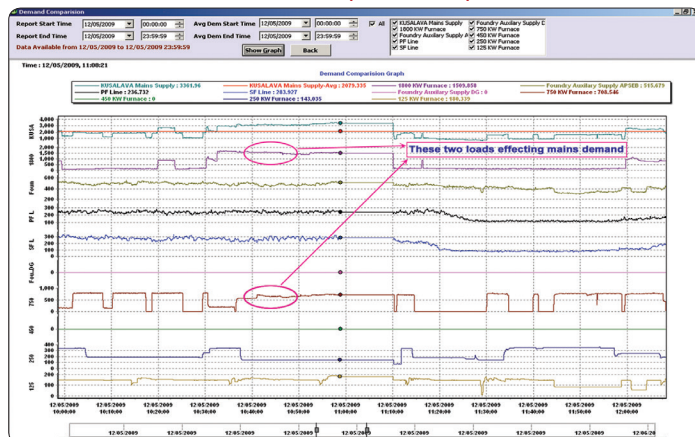
### Online Power Reports



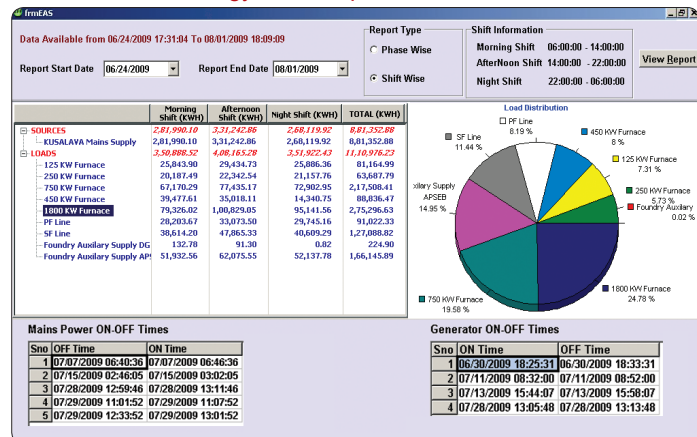
### Energy Consumption - Shift wise & Day wise



### Demand Comparison Report



### Energy Consumption - Load wise



Efftronics Systems Pvt. Ltd.  
**ISO 9001 : 2015**  
20000873 QM15

Approved by  
**RDSO**  
Govt. of INDIA  
Ministry of Railways

'R & D'  
Recognised by  
**DSIR**  
Govt. of INDIA

**CRISIL**  
RESEARCH  
Rating: **BB**

**EFFTRONICS SYSTEMS PVT. LTD.**

Brundavan Colony, Vijayawada-520 010, AP., INDIA

+91 866 2466684, 2466675, www.efftronics.com