

Water SCADA aims to provide Auditing in Drinking Water Systems. The system logs Water flow, Volume accumulated and Water quality in various stages of Production and Distribution. The entire data is transferred from each of the Water treatment plant, Service reservoir / Over Head tanks, Strategic points to the central place, where the data is posted in to database. Application software generates various reports and exceptions for online control and data analysis.

INTELLIGENT ELECTRONIC DEVICE (IED)



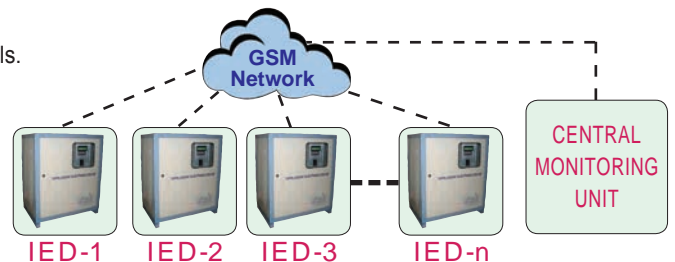
CENTRAL MONITORING UNIT



ADVANTAGES

- ❖ Total accountability in Water production and Water distribution system.
- ❖ Continuous monitoring and display of network flow status and supervisory controls.
- ❖ Reports overflows, leakages, Unaccounted For Water (UFW) at various stages of distribution.
- ❖ Uniform distribution of water can be achieved though out the supply area eliminating imbalances.
- ❖ Online information and historical data helps in managing demand variations.
- ❖ Automated reports helps in taking timely decision.
- ❖ Continuous assessment can ensure water Quality & Quantity.
- ❖ Improves quality of service and overall plant efficiency.

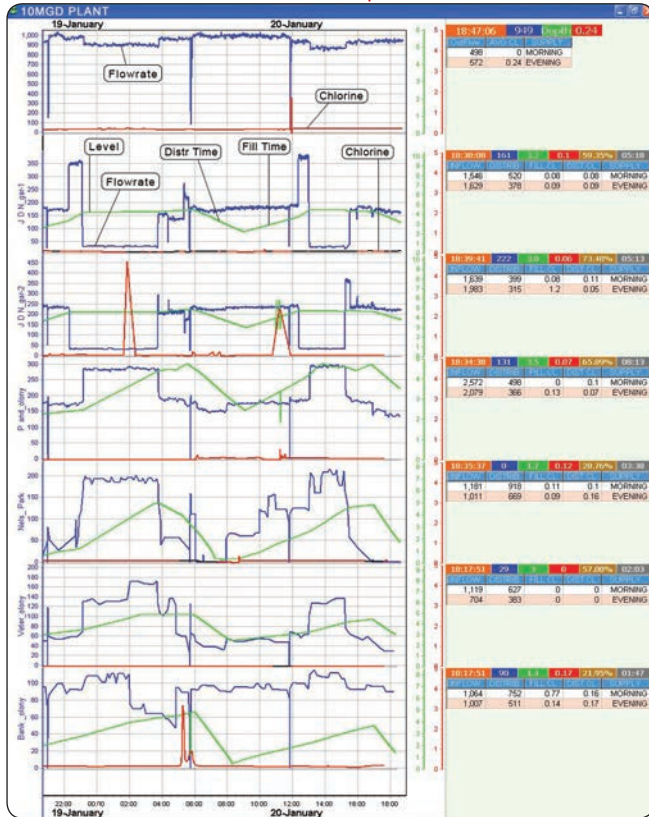
BLOCK DIAGRAM



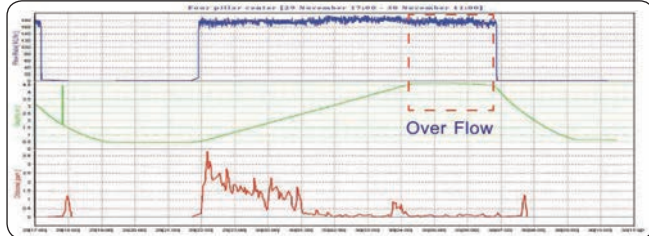
* Due to continuous Research and Development product specifications are subjected to change.

REPORTS

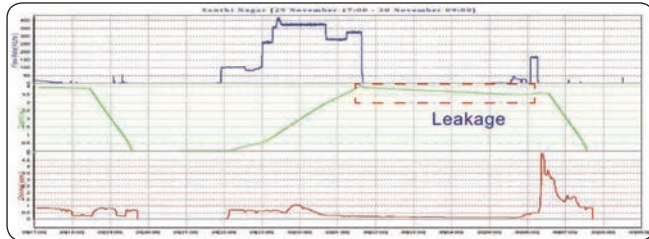
Online Report



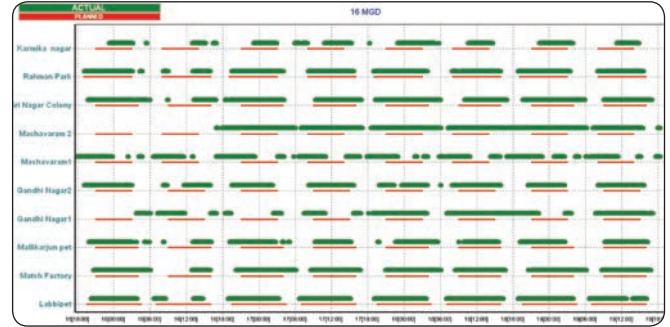
Overflow Report



Leakage Report



Schedule Deviation Report



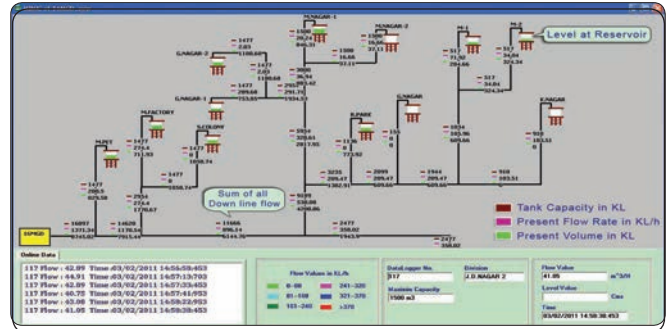
Reservoir Monthly Report

Sl. No	Reservoir Name	Account Count(Q2)	Overflow Quant(Q2)	Leakage Quant(Q2)	Insufficient Filling Count	Overfill Distribution Count	Levior Supply %	Late Supply %	Late Distribution	Early Distribution
1	Malharajpet	11	2,323.00			12	16			
2	Lorry Stand	12	7,715.00			2	63			8
3	Frizerpet				2				28	
4	Gandhi High School	12	11,856.00		3	4			61	37
5	Priyadarshini Colony	10	18,072.00		1	1			1	5
6	Orrs	14	7,510.00			17	30			4
7	Four Pillar Center	32	20,098.00			5	49			21
8	H B Colony - 1									25
9	H B Colony-2	26	98.00	374.00		1			22	21
10	Tannerpet									31
11	Brahmapuri Mattam-1									11
12	Srinivasa Mahal									
13	Golapalem Gattu	21	4,506.00						60	20
14	H B Colony - 1								21	
15	Rama Raye Nagar	18	18,567.00		4	13			20	9
16	Gandhi Bay-1	3	2,346.00			2			64	
17	Gandhi Bay-2		3,710.00						25	

Online Faults

Reservoir Name	Fault Message	Occurred Time
Golapalem gattu	Less Chlorine	01/19/2010 00:06:18:844
Fish Market	Less Chlorine	01/19/2010 00:13:26:484
H B Colony-2	Less Chlorine	01/19/2010 00:07:30:422
H B Colony - 1	Filling Started Late	01/19/2010 00:02:45:688
H B Colony - 1	Less Chlorine	01/19/2010 00:04:04:891
Kedareswarpet2	Filling Started Late	01/19/2010 00:01:00:809
Kedareswarpet2	Less Chlorine	01/19/2010 00:06:54:219
Machavaram 2	Filling Started Late	01/19/2010 23:59:53:234
P and T Colony	Filling Started Late	01/19/2010 00:03:16:784
ORRS	Filling Started Late	01/19/2010 00:03:03:812
Bank Colony	Filling Started Late	01/19/2010 00:12:06:859
Priyadarshini Colony	Filling Started Late	01/19/2010 00:03:30:141
Neison Mandela Park	Filling Started Late	01/19/2010 00:06:17:510
Vambay colony	Filling Started Late	01/19/2010 00:03:00:859

Online Status of Hydraulic zones



Daily Report

Sl. No	Reservoir Name	Capacity (KL)	Height (m)	Form (m)	Time (H:MM)	Actual Duration (H:MM)	Inflow (LPH)	Overflow (LPH)	Total Inflow (LPH)	Total Overflow (LPH)	Fill Start Level (m)	Fill End Level (m)	Fill Volume (KL)	Overflow Volume (KL)	Fill Status	From Time	To Time	Duration (H:MM)	Start Level (m)	End Level (m)	Net Qty (LPH)	Fill	Overflow	Storage	Total	Filling	Average CL (LPH)					
1	Lakshmi	1,477.00	5.00	18.13	01:27	01:13	1,485.26	0.00	1,080.63	116.75	2,092.84	0.10	25.10	1,263.91	1,263.91	99%	00:51	00:34	01:21	4.80	1,263.91	0.30	50.65	1,489.32	43:55	0.00	1,124.57	66.59	1,177.77	1.23	1.80	
2	Match Factory	1,477.00	5.00	20.26	05:26	18:09	1,482.06	0.00	237.20	40.96	4,730.22	0.22	60.85	4.81	1,451.86	1,451.30	98%	00:00	07:30	02:39	4.72	1,423.02	0.29	87.26	1,365.76	3,093.86	0.00	266.03	20.48	3,167.85	1.42	0.86
3	Malharajpet	1,477.00	4.35	20.03	05:01	05:57	1,550.36	0.00	0.97	36.00	1,587.33	0.11	34.31	3.98	1,241.25	1,206.94	91%	00:02	09:05	09:03	3.89	1,213.18	0.25	77.97	1,135.21	343.42	0.00	29.04	38.00	408.48	1.57	0.98
4	Lorry Stand	1,477.00	3.80	20.28	02:24	05:55	1,436.60	0.00	1.52	1.18	1,438.50	0.11	35.82	3.56	1,376.82	1,341.30	97%	00:08	09:05	04:06	3.80	1,262.98	0.25	85.17	1,178.21	65.60	0.00	28.05	1.18	92.73	2.44	1.88
5	Gandhi Nagar1	1,477.00	4.50	18.15	02:36	05:20	1,563.32	0.00	17.10	300.66	1,861.10	0.74	247.93	4.29	1,437.35	1,189.42	95%	00:00	07:46	01:45	4.02	1,346.89	1.08	361.95	985.64	373.90	0.00	107.56	300.66	702.12	1.53	1.69
6	Gandhi Nagar2	1,477.00	4.15	18.19	02:11	07:51	1,451.10	0.00	4.98	2.01	1,457.89	0.06	255.79	3.89	1,374.44	1,118.85	94%	00:57	07:31	01:34	3.88	1,204.86	0.80	294.54	1,000.12	332.45	0.00	84.36	2.01	418.82	1.70	0.75
7	Machavaram 1	517.00	3.00	17.10	04:21	11:10	1,840.54	0.00	130.24	3.95	1,974.73	0.48	82.61	1.87	322.61	239.80	82%	00:01	06:25	02:24	1.62	279.48	0.38	65.56	213.92	700.74	0.00	173.37	3.95	876.98	0.96	0.96
8	Machavaram 2	517.00	3.00	18.29	05:00	10:21	1,547.91	0.00	32.88	5.09	1,555.78	0.41	72.73	2.49	429.58	350.65	83%	00:01	06:02	02:42	2.43	429.58	0.42	72.46	357.12	189.88	0.00	32.88	6.09	238.23	0.98	0.98
9	Gandhi High School	1,023.00	3.20	19.53	02:38	06:36	1,046.91	0.00	2.80	7.55	1,056.96	0.20	30.47	3.12	816.48	877.01	93%	00:35	07:49	02:14	2.84	890.55	0.23	49.73	800.82	169.90	0.00	68.43	7.55	245.88	1.99	1.11
10	Kedareswarpet-1 (S&D)	1,363.00	3.38	19.48	05:58	10:09	1,189.04	0.00	11.76	299.51	1,489.31	1.23	802.38	3.13	1,278.43	775.04	93%	00:58	07:49	01:51	3.18	1,208.88	0.96	302.11	906.75	300.00	0.00	88.67	299.51	883.84	0.71	0.15
11	R. S. C. Bhow Nagar	1,477.00	5.00	02.34	06:13	03:39	1,451.44	0.00	24.84	79.85	1,556.93	1.72	489.90	4.76	1,403.53	904.83	95%	00:28	07:25	03:01	4.74	1,307.58	0.81	228.43	1,189.15	46.81	0.00	30.59	79.85	157.25	0.86	1.54
12	Vambay colony	1,364.00	5.13	20.43	03:54	07:10	1,715.15	0.00	0.69	0.21	1,716.03	0.23	44.36	4.99	1,418.63	1,374.17	97%	00:27	07:25	02:58	4.95	1,406.07	1.84	409.32	936.75	349.98	0.00	13.12	0.21	364.31	0.52	1.72
13	D. D. Nagar-1	1,500.00	5.00	20.30	01:41	05:11	1,865.14	0.00	384.82	475.93	1,823.89	1.90	493.86	4.51	1,337.58	877.91	90%	00:00	09:01	03:00	4.37	1,206.50	2.08	528.22	770.28	105.23	0.00	411.91	475.93	903.07	0.38	0.24
14	D. D. Nagar-2	1,477.00	4.95	20.38	23:26	02:48	1,037.51	0.00	769.20	760.34	2,204.13	2.92	802.77	4.48	1,302.50	624.73	91%	00:46	09:07	03:20	3.99	1,162.69	2.14	540.40	622.28	112.78	0.00	964.10	767.34	1844.22	0.18	0.18
15	P and T Colony	1,500.00	5.00	22.38	03:48	05:21	1,247.96	0.00	379.73	512.45	2,130.74	1.29	316.79	4.75	1,364.28	1,047.49	95%	00:40	08:56	03:15	4.37	1,248.52	2.21	590.47	688.05	200.07	0.00	494.48	512.45	1,207.01	0.00	0.00
16	Neison Mandela	1,900.00	5.00	19.09	06:54	10:45	1,033.00	0.00	0.00	1.89	1,012.18	0.28	30.62	4.75	844.04	913.42	95%	00:58	09:09	02:10	4.76	946.21	0.32	36.49	910.72	96.79	0.00	-3.08	1.89	96.69	0.38	0.38

'R & D'
Recognised by
DSIR
Govt. of INDIA

UL
Efftronics Systems Pvt. Ltd.
ISO 9001 : 2008
20000873 QM08

Approved by
RDSO
Govt. of INDIA
Ministry of Railways

EFFTRONICS SYSTEMS PVT. LTD.
40-15-9, Brundavan Colony, Vijayawada-520 010, A.P., INDIA
Phone: +91(866) 2466675, 2493375 Fax: +91(866)2474097
E-mail: info@efftronics.com Visit: www.efftronics.com, www.effe.in